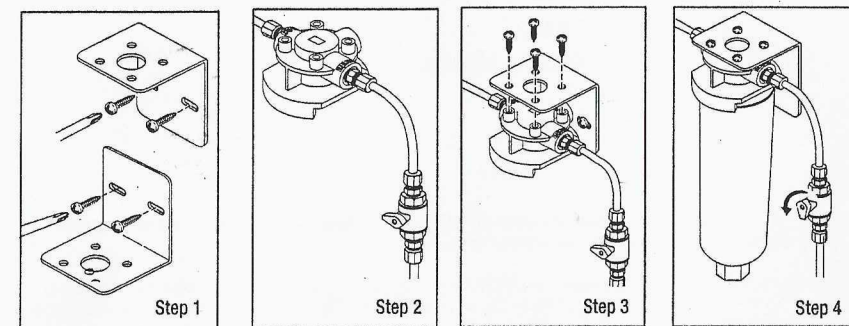


Procedure for Installing CS-400 Series Water Filtration Systems

Before starting, close shut-off valve on cold water line.



⚠ WARNING

To reduce the risk associated with hazardous voltage:

- Do not install near electric wiring or piping which may be in path of a drilling tool when selecting the position to mount the filter bracket.

IMPORTANT NOTES

- Note adjacent equipment which may interfere with system fastening screws.

Step 1. The Mounting Bracket may be installed with the back of the bracket in the up or down position. Screws may be used to attach the bracket to the desired surface or the industrial double-sided tape strip can be cut in half and used to mount the bracket. (Be sure that both the surface of the bracket and the mounting surface are clean. Be sure to allow at least 2" (5 cm) of clearance below the unit.)

Step 2. The filter must be installed with inlet and outlet ports as labeled. Make sure not to reverse the connections. **IMPORTANT:** ON TOP OF THE FILTER HEAD you will see the numbers 1, 2, and 3 molded into the plastic head.

Port 3 is labeled inlet.

Port 1 is labeled outlet.

Port 2 is not an option and is not threaded for fittings

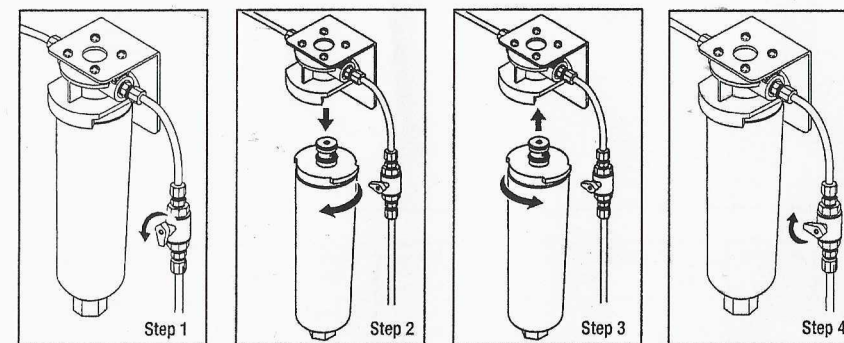
The shut off valve should be located in line somewhere between the incoming water line and the inlet fitting.

Step 3. Attach the head to the bracket with the screws provided. All four screws can be used, or two can be used to mount the bracket to the desired surface.

Step 4. Install cartridge, (see Cartridge Change Instructions on next page and follow Steps 3 and 4) and make any required connections. Pressurize the system and check for leaks. Flush system in accordance with Performance Data Sheet. Water may run cloudy but will quickly clear.

Replacement Cartridge Change Instructions

CAUTION: The disposable filter cartridge must be replaced every six months or sooner if there is a decrease in water pressure. Always have spare cartridges on hand.



Step 1. Close shut off valves before (inlet) and after (outlet) filter head. Depressurize filter.

Step 2. Grasp head and cartridge securely, and turn used cartridge slowly to the left. If water line has not been properly depressurized, a small discharge of water may occur. Gently pull cartridge straight out and discard.

Step 3. Align tabs of new cartridge with head and insert new cartridge into head. Turn cartridge to the right until the filter stops.

Step 4. Place the inlet shutoff valves in regular working position. Due to air and carbon fines water may initially run cloudy but will clear. Flush system in accordance with Performance Data Sheet.